

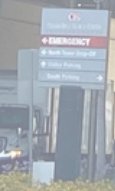


iEMPATHIZE^{•ORG}
ANNUAL REPORT

2024

MAX FACTOR FAMILY TOWER

CENTRAL MEDICAL CENTER



THE MISSION REMAINS: EQUIP ADULTS, EMPOWER YOUTH, END EXPLOITATION

Year after year, we are overwhelmed with gratitude... for our sponsors, donors, collaborators, survivor leaders, program users, and empathy champions. It truly takes a community to affective fight exploitation and human trafficking. This year, that sentiment remains true.

You have played a crucial part in our successes — *your commitment to ending exploitation and human trafficking has been a powerful, driving force.*

We hope you find this annual report encompasses the incredible work done with iEmpathize in 2024. Behind the numbers, you will encounter real stories of youth, industry professionals, and community leaders as they learn their intersection with exploitation.

What excites us as we look to 2025 (and beyond) is the increasing opportunities to engage more people and more industries in exploitation prevention education. This past year illustrates that we have more momentum to present our curricula than ever before. It is with your support that we can harness this momentum.

The iEmpathize team stands united in appreciation, recognizing that it is through collaborative efforts and a shared vision that we can make lasting change.

Thank you for your role in championing empathy and contributing to our mission.

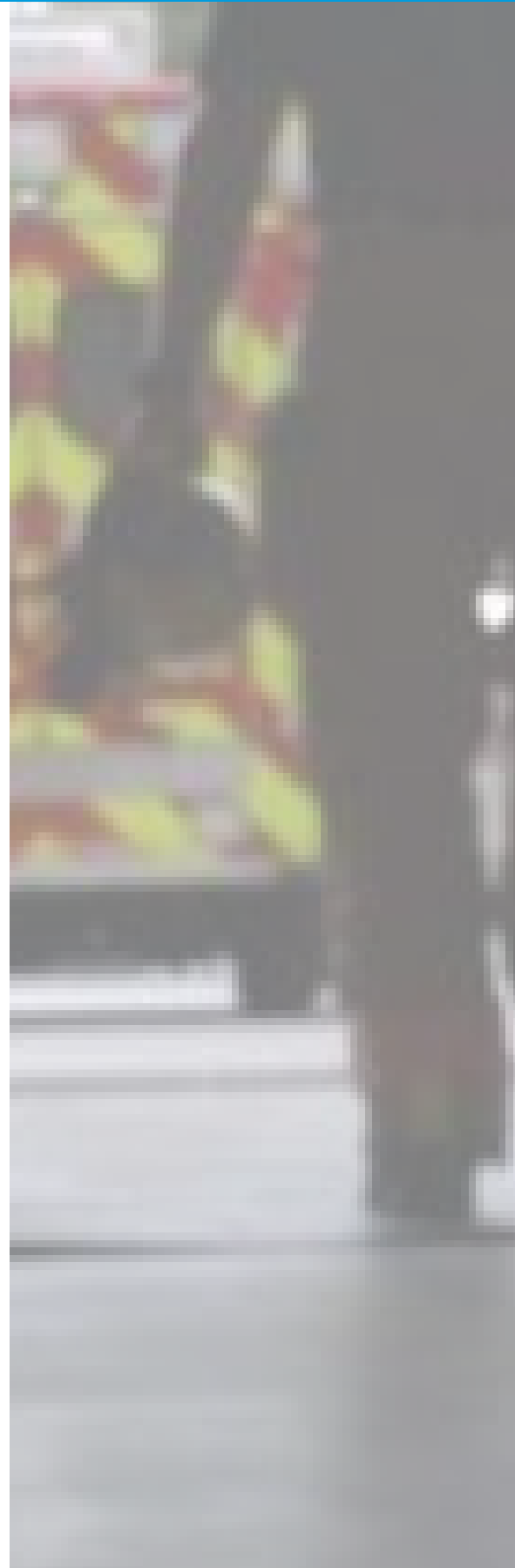
Gratefully,

Mariana

Mariana Loboguerrero
Co-Director

Guido

Guido Hajenius
Co-Director





iEMPATHIZE^{ORG}
IMPACT OVERVIEW

AS OF 2024...

MORE THAN **200 IMPACT PARTNERS**

MORE THAN **40,000 EMPOWERED YOUTH**

MORE THAN **1.4 MILLION ADULTS TRAINED**

MORE THAN **1 MILLION ONLINE MEDIA VIEWS**

EQUIPPING ADULTS

Exploitation is a problem in every community. The solution - stop exploitation before it starts. To accomplish this, we prioritize prevention in professional sectors and social spaces to help people identify when and where they intersect with this issue, equipping them with tools and opportunities to respond.



The Intersect Response Platform

The Intersect Response Platform is an exploitation prevention training library aimed to train adults to safely recognize and respond to exploitation - actively identifying where it's happening and when it's happening. All trainings use original film, photography, survivor voices, and interactive activities to best contextualize the issue and engage communities within the spaces they live and work.

1.4M

Adults Trained in
All Industries

2

New Courses
Available

100

Intersect Summit
Participants

Current Available Courses



FIRST RESPONDERS



HOSPITALITY



LAW ENFORCEMENT



LABOR



GENERAL



MULTI-FAM LIVING



SOCIAL WORK



OIL & GAS



HOSPITALS



YOUTH



6

First Responder New Partnerships

FireDex,
Tencate,
IDEX,
HURST Jaws of Life,
Akron Brass,
Darly

Intersect Summit

In April, iEmpathize welcomed 100 participants for a 2 day Summit in Roswell, NM. Just 1 month prior, Roswell police uncovered sexual exploitation in 2 illicit massage parlors. The Summit gained the attention of the NM Attorney General, oil and gas professionals, local nonprofits, first responder departments, health services, and county event planners. Since the Summit, iEmpathize has developed collaborations and partnerships with numerous state leaders, been invited to participate in community events, and gained state sponsorships. This Summit resulted in a sponsorship with NMOGA and their national partners as well as increased exposure across the state. Requests for both the adult and youth trainings are ongoing and growing.



3

New Firehouses Trained in Colorado

200

Firefighters Trained in Central Florida

First Responders

2024 has seen an increasing success of our 1st responders course as we develop new industry partnerships and host trainings throughout Colorado, Ohio, Nevada, North Carolina, Texas, Florida, California, and Indiana. This spring, iEmpathize promoted the exploitation prevention training at FDIC International (a major 1st responders expo). While there, iEmpathize developed new relationships with fire departments, community advocates, and course sponsors.

“When I heard the first question, ‘Have I ever had a human trafficking victim in my care during my time as a first responder?’ I thought, ‘No way’. Then, after the training, it was clear I have had 5 or 6.”

-Windsor First Responder

Multi-Family/Rental Living

iEmpathize is seeing incredible growth in our multi-family living course. In Florida alone, over 120,000 property managers have completed the exploitation prevention course. Through a partnership with Grace Hill, we expect to see an increasing number of property managers equipped to identify exploitation and respond accordingly.



*New
Partner!*

**Cedars-Sinai
Medical Center**

'Health Cares' Course

This year, iEmpathize began our expansion of the Intersect Response Platform to the health care industry. The over 14.7 million healthcare professionals in the nation are all critical in preventing exploitation as they are often the first to face a potential victim or crime.

To engage this massive industry, iEmpathize partnered with Cedars-Sinai in California to produce a 24-minute video highlighting the unique ways healthcare professionals interact with exploitation and launched a 'Health Cares' training. 'Health Cares' seeks to produce a trafficking prevention program for the range of roles in the healthcare industry. Cedars-Sinai and iEmpathize collaborated to produce footage articulating red flags within healthcare to build a training course for medical professionals. This content could not have been produced this year without the presenting sponsorship from Red Empress.



"iEmpathize gives people the tools to prevent, identify, and respond to victims of human trafficking. Their team is empathetic and has the capacity to catch important details and nuances that make education clear".

**-Karen Silva, PHD, MSN,
RN-BC Medical Surgical
Cedars Sinai**

EQUIPPING YOUTH

Empower Youth Program

Educating youth about exploitation and empathy are the cornerstones to preventing the continuance of exploitation. Through our EYP program, this happens in an interactive, engaging, and relevant way. The curriculum uses real life stories of young people safely sharing strategies they used to navigate their own exploitation vulnerabilities.

California: Continued 8-year partnership with the Male and Female Leadership Academy in Long Beach and 3-year partnership with Los Angeles County Schools.

Texas: Partnered with Southern Grit in Wichita Falls, TX to help bring EYP to over 1,000 students in the local schools.

Nevada: New partnership with St. Jude's Healing Center in Nevada (part of Clark County Schools). The Healing Center works with survivors of trafficking and chose EYP as the youth curriculum to take survivors through. Also continued partnership with largest foster care provider in the state.

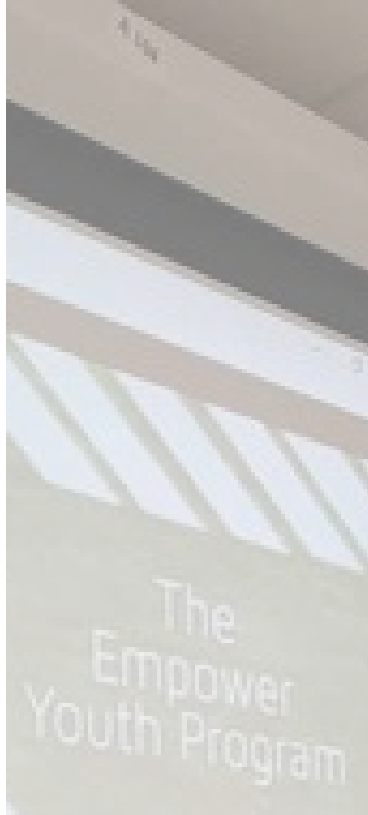
Florida: Became a state-wide curriculum requirement for foster group homes in Florida, reaching over 100 youth per month. The EYP curriculum is available for free on the state learning platform and is an active part of their training.

Arkansas: Partnered with Hope Foundation to bring EYP into local youth organizations and high schools.

New Mexico: Hosted 2 Prevention Approach Workshops in Roswell ISD School District for 110 participants. Increased community connection and presented EYP as a viable tool.

“More than 91% of domestic minor trafficking victims in the state of Georgia were enrolled in school at the time of their exploitation”.

-2023 Polaris Report



26

States Using
EYP

1,000

Students Trained
in Wichita Falls

100

Group Homes
Trained in Florida

EQUIPPING COMMUNITIES

The Apathy Effect Exhibit

The Apathy Effect Exhibit is an immersive, mixed media experience, using photography and artifacts to engage and equip communities. The aim is a call to action to recognize and respond to exploitation. 2024 saw powerful outreach nationwide. Highlights include: a lunch and learn with Ad Astra in Kansas, Apathy Exhibit in New Mexico, FDIC presentation in Indiana, firehouse trainings and exhibit in Colorado, Apathy Exhibit in Texas, and state-wide Chief Training in Ohio.

\$40k

Raised at
Wine Soiree

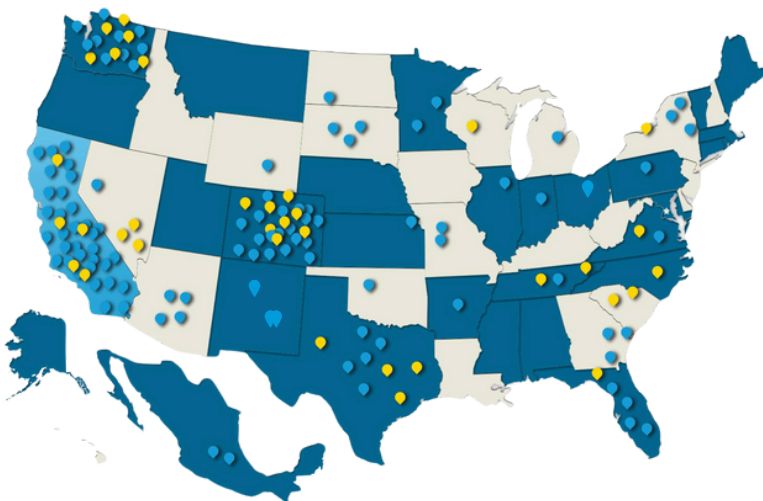
100

Fire Chiefs
Connecting with
Trainings



Wine Soiree Fundraiser

In November, iEmpathize hosted a Wine Soiree fundraiser at Balistreri Vineyards in Denver, CO. Speakers included board members, supporters, and exploitation prevention leaders Dr. Holly Priebe Sotelo (USC Suzanne Dworak-Peck School of Social Work) and Matt Driscoll (Las Vegas Fire & Rescue). Those gathered at the winery heard speakers deliver powerful messages on the importance of exploitation prevention education, leading to the soiree raising \$40,000 for iEmpathize's prevention work.



Communities Served by iEmpathize



PARTNERS & COLLABORATORS

iEmpathize programs and partnerships result in the creation of safety plans for thousands of youth, the recovery of survivors, and the prosecution of perpetrators. These relationships are vital in the fight to end exploitation

100% Chaves County Initiative
SNMEDD Economic and Housing Summit
Chaves County Health Expo
SENM Food and Housing Summit
HagermanForward
Cedars-Sinai Medical Center
USC Suzanne Dworak-Peck School of Social Work
Los Angeles County Schools
Male and Female Leadership Academy
Southern Grit
St. Jude's Healing Center
Florida Department of Children and Families
Hope Foundation
Wynn Casino
Las Vegas Fire
FDIC
Grace Hill
Devereux Advanced Behavioral Health

“After [the iEmpathize training], I now know I witnessed a human trafficking victim in my care.”

-Colorado First Responder

2024 IEMPATHIZE PROGRAM SPONSORS

Our 'full spectrum' supporters are vital in pursuing our mission to end exploitation. Thank you to all of our 2024 sponsors at all levels. We could not accomplish our mission of prioritizing prevention and fighting human exploitation without you.

INDIGO:
\$50K+



BLUE:
\$25K

Thomas and Dorothy
Leavey Foundation

GREEN:
\$10K



YELLOW:
\$5K



ORANGE:
\$2.5K



Narrow
Foundation



RED:
\$1K



Rotary
District 5280



Honeywell

2024 IEMPATHIZE FINANCIALS

Total
Income

\$306,528

Total
Expenses

\$268,064

We couldn't have
done it without your
generous support!

Thank you!



Contact iEmpathize at:

✉ info@iempathize.org

🌐 www.iempathize.org